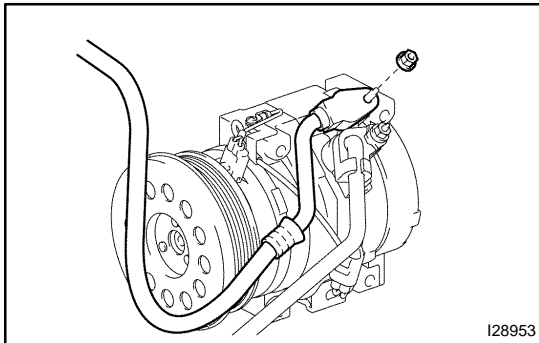


REMOVAL

1. RUN ENGINE AT IDLE SPEED WITH A/C ON FOR APPROX. 10 MINUTES
2. STOP ENGINE
3. DISCONNECT NEGATIVE (-) TERMINAL CABLE FROM BATTERY
4. DISCHARGE REFRIGERANT FROM REFRIGERATION SYSTEM
5. REMOVE ENGINE UNDER COVER

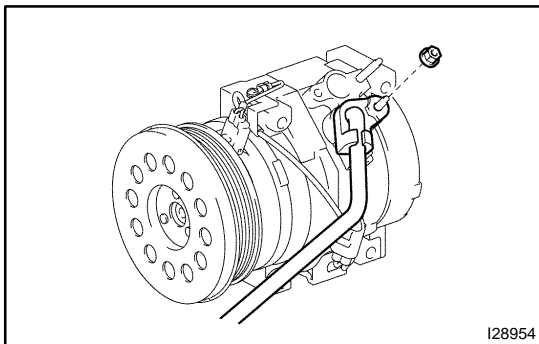


6. DISCONNECT DISCHARGE HOSE

- (a) Remove the nut and disconnect the discharge hose sub-assy from the compressor and magnetic clutch.
- (b) Remove the O-ring from the discharge hose sub-assy.

NOTICE:

Seal the openings of the disconnected parts using vinyl tape to prevent moisture and foreign matter from entering.

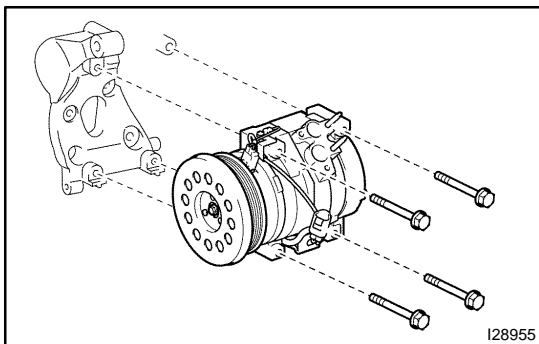


7. DISCONNECT SUCTION HOSE

- (a) Remove the nut and disconnect the suction hose sub-assy from the compressor and magnetic clutch.
- (b) Remove the O-ring from the suction hose sub-assy.

NOTICE:

Seal the openings of the disconnected parts using vinyl tape to prevent moisture and foreign matter from entering.



8. REMOVE COMPRESSOR AND MAGNETIC CLUTCH

- (a) Disconnect the connector.
- (b) Remove the 4 bolts and the compressor and magnetic clutch.